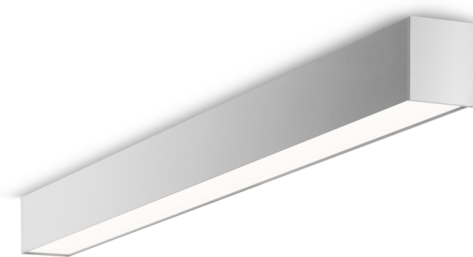




**Art.-No.: YWDLA-LAWD-4201-U**  
**LED luminaire "LARO", wall / ceiling surface mounting,**  
**rectangular, 1403x93x80mm, 42W, 4300lm, 3000K, CRI**  
**>80, IP40, UGR <19, Dali dimmable**

LED ceiling- and wall-mounted luminaire, LARO series, with direct and direct/indirect beam. Housing made from aluminium, white, powder-coated. Diffuser made from plastic (PMMA), micro-prismatic, UV-stabilised. Operating unit can be switched or dimmed (DALI dimmer), integrated. UGR < 19 and screen-compliant in accordance with EN 12464-1. Version with CASAMBI® Bluetooth control available.



## TECHNICAL DATA

Electrical data	
Input Voltage AC	AC 220-240V / 50-60Hz
Power Factor	0.95
System power	42 W
Inrush current	20 A
Luminaires on B10A fuse	15 Stk.
Luminaires on B16A fuse	24 Stk.
Luminaires on C10A fuse	24 Stk.
Luminaires on C16A fuse	40 Stk.
Connection cross section	1.5 mm <sup>2</sup>
Dimming	DALI
Electrical version	with internal operating device, dimmable
CASAMBI Ready	Yes



Photometrical data	
Light source	LED
Colour temperature	3,000 K
Rated luminous flux	4,300 lm
Luminous efficacy	102 lm/W
Light colour	830
Colour rendering index (CRI)	> 80
Colour tolerance	2
Beam angle	68/66 °
UGR	18.7
Lifetime (h, at 25°C)	50,000 h, L80
Acceptance tests	
Certifications	CE
Protection class	I
Ingress protection (IP) rating	IP 40
Glow wire test	650° C
Ambient temperature	0 to +25 C°
Physical data	
Mounting method	ceiling mounted, wall mounted
Housing material	Aluminium
Housing colour	white
Cover material	PMMA
Length (L)	1,403 mm
Width (B)	93 mm
Height (H)	80 mm
Product weight	6.3 kg
Weight incl. Packaging	6.5 kg
Packaging Length (L)	1,600 mm
Packaging Width (B)	150 mm
Packaging Height (H)	150 mm



**LIGHT DISTRIBUTION**

